



Iceland

Wild Coldwater Prawns



ICWPF
Copenhagen
November 2015

Yngvi Óttarsson

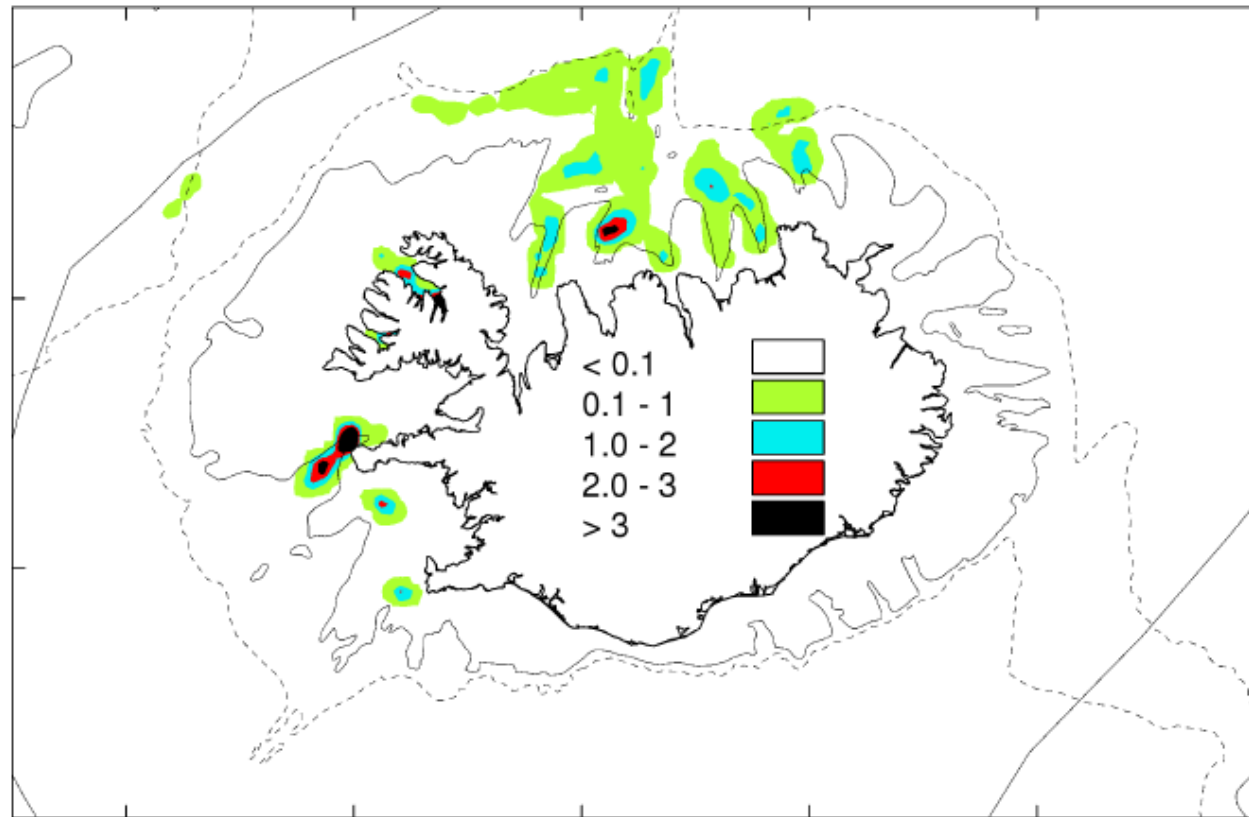


Overview

- Fishing grounds and status of the stocks around Iceland
- Catch history
- Peeling plants operating
- Prices for c&p
- Outlook for 2016



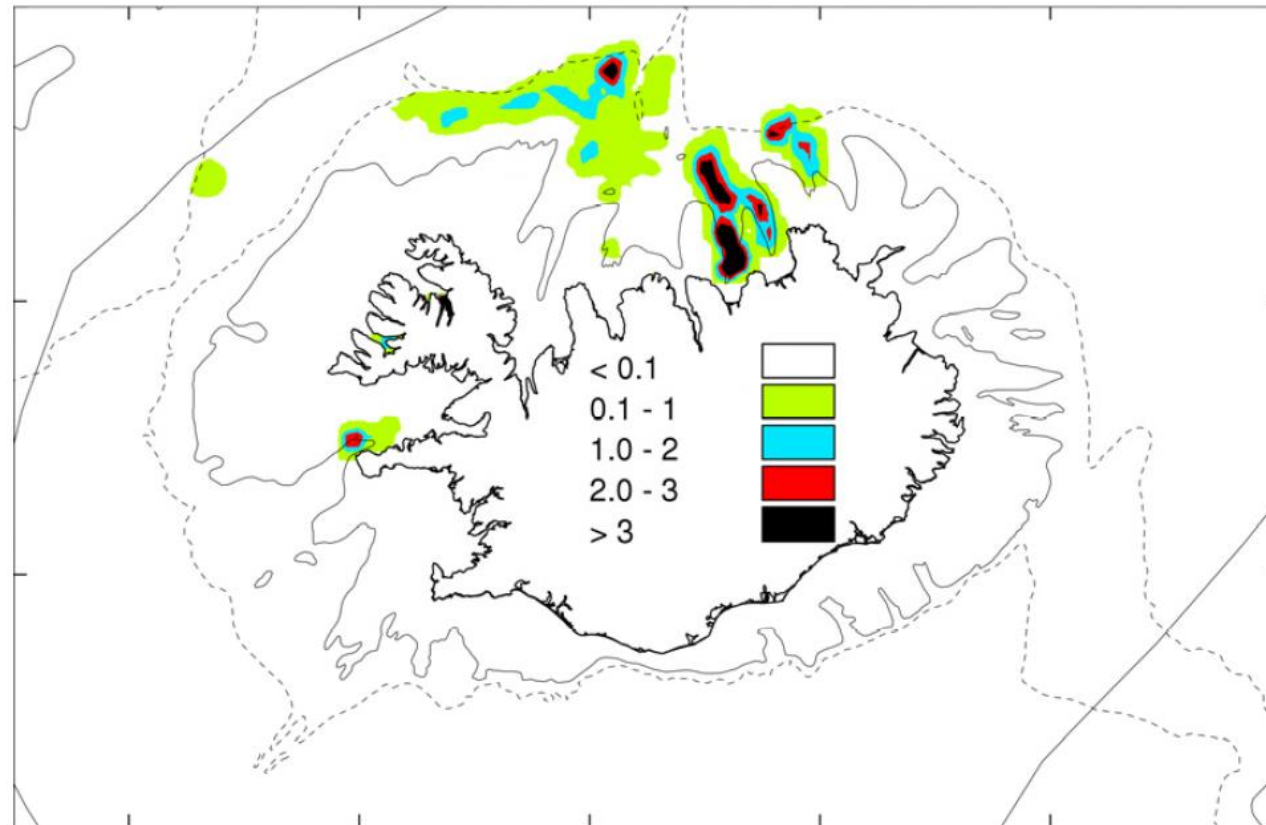
Fishing grounds in 2014



Northern shrimp. Fishing grounds in 2014. The dark areas indicate highest catch (tonnes/nmi²).



Fishing grounds 2011



Total prawn catch on Icelandic grounds

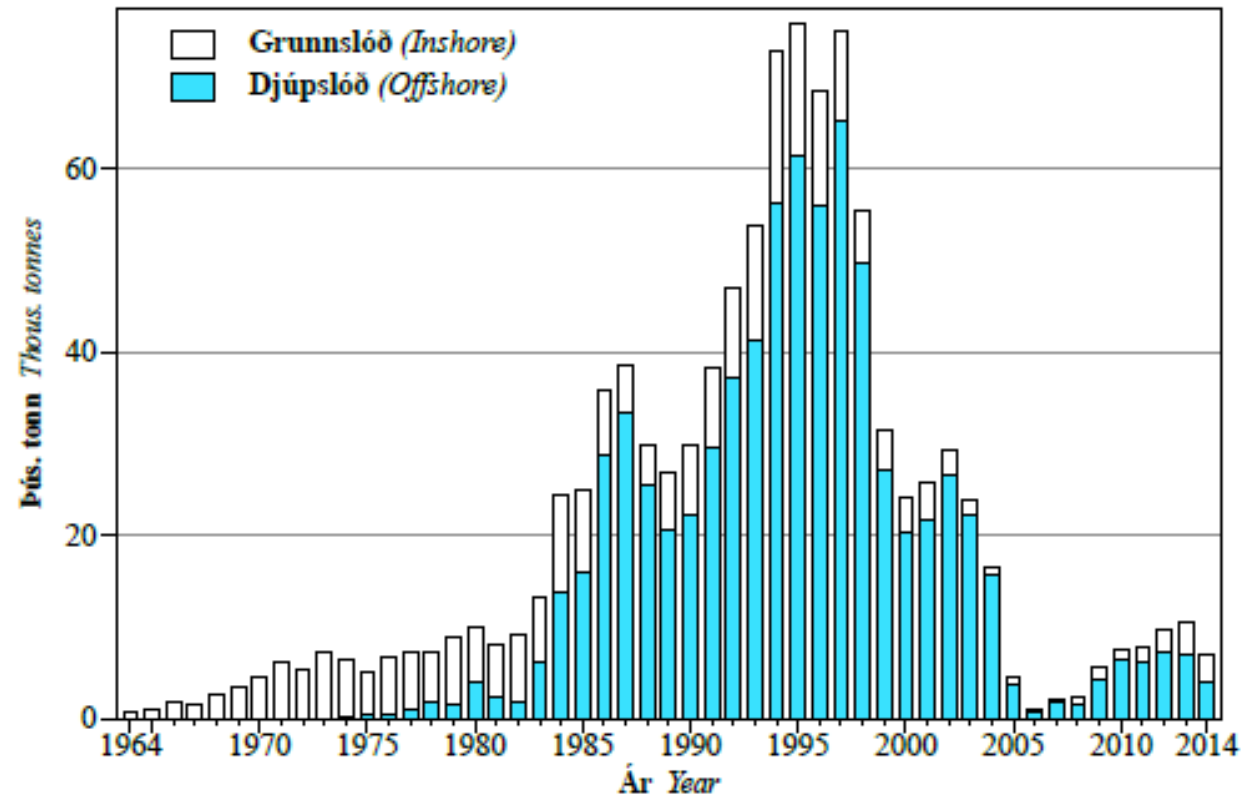


Fig. 2.30.1. **NORTHERN SHRIMP.** Landings from inshore and offshore areas since 1964.

Offshore prawn stock biomass index, CPUE

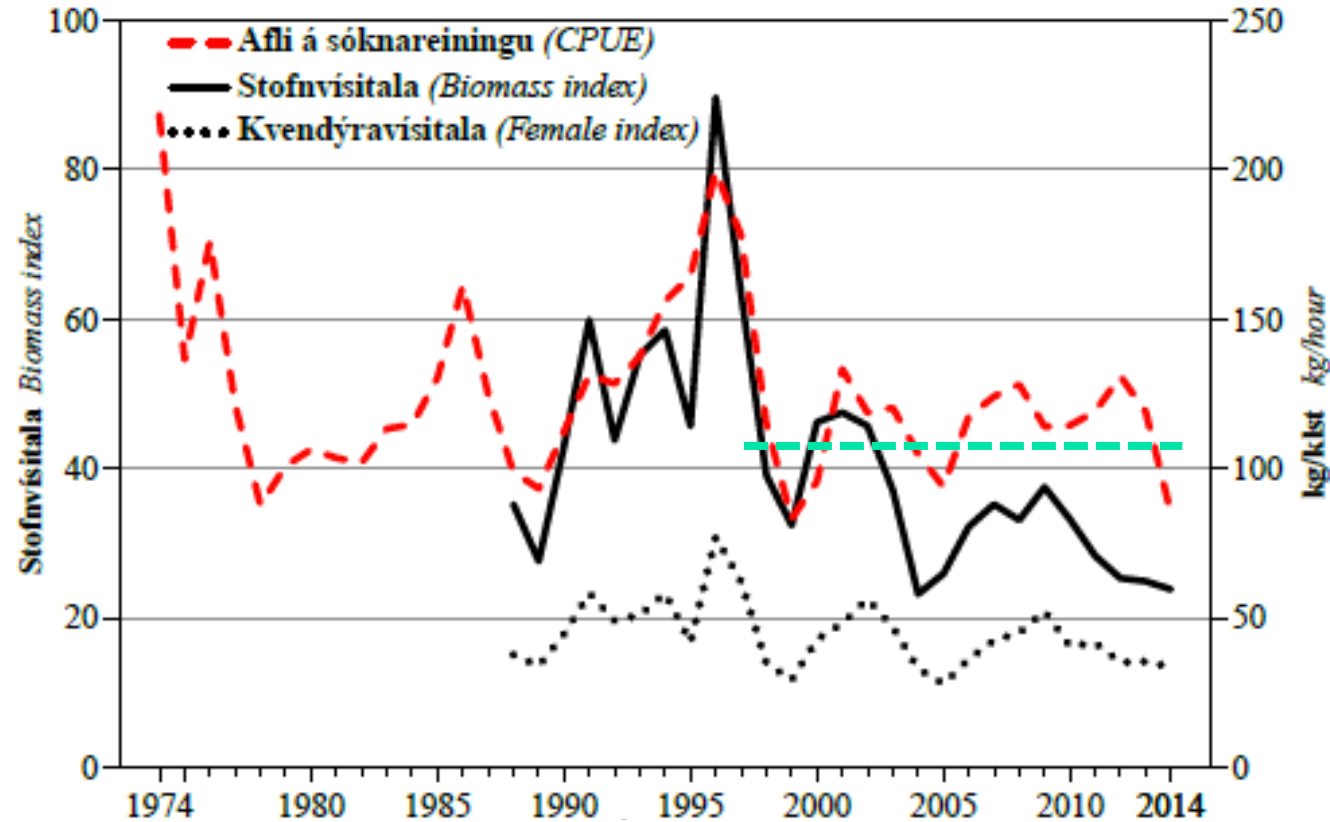


Figure 2.30.3. Northern shrimp, off-shore. Total biomass index and female index from survey and commercial CPUE.



Vessels fishing

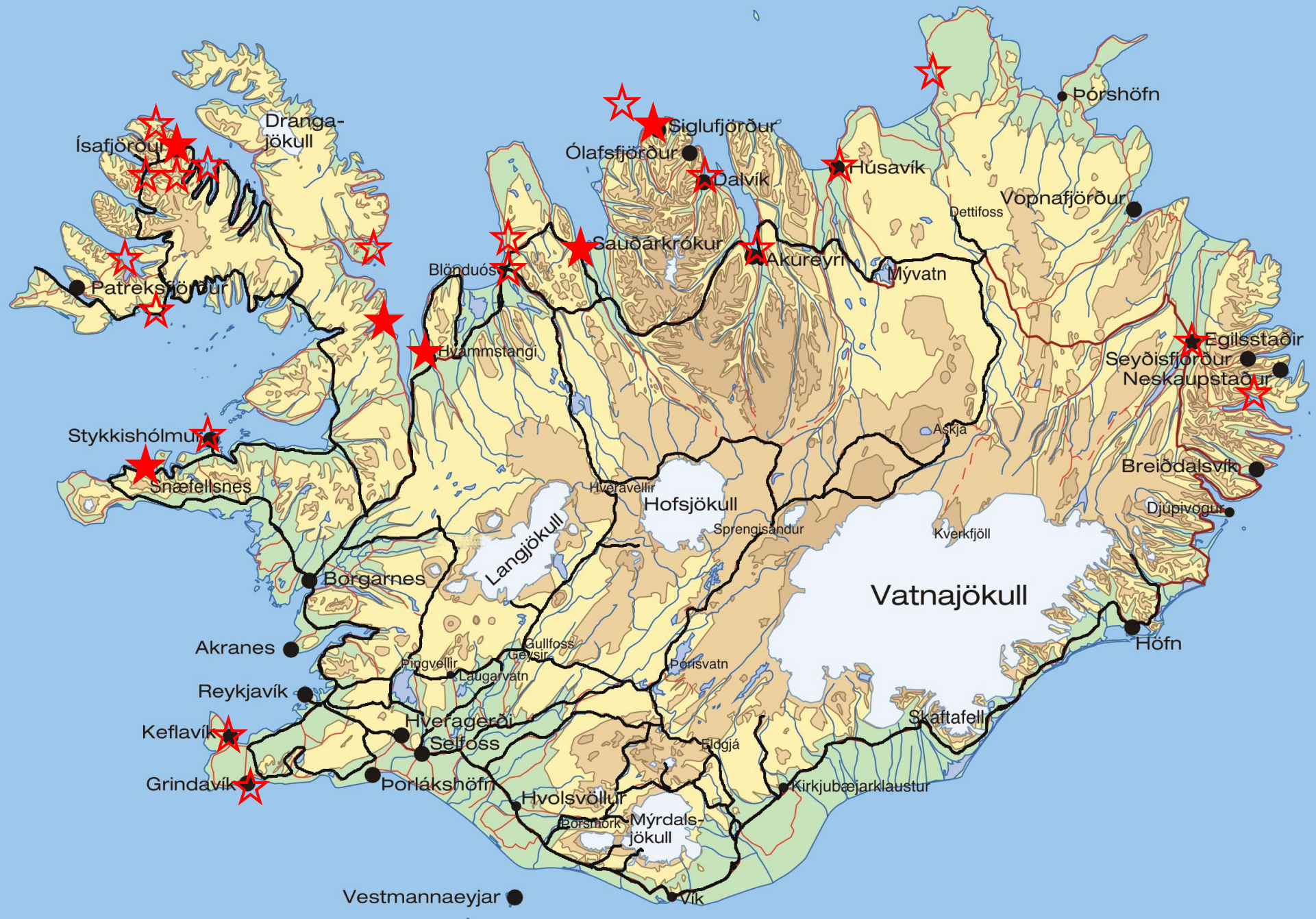
- Offshore 1992-2000
 - 20-30 trawlers processing and freezing onboard
 - 50-100 smaller boats, fresh landings
- Offshore 2015
 - 1 trawler processing and freezing (3 months)
 - 10-20 smaller boats and trawlers, fresh landings



Peeling plants

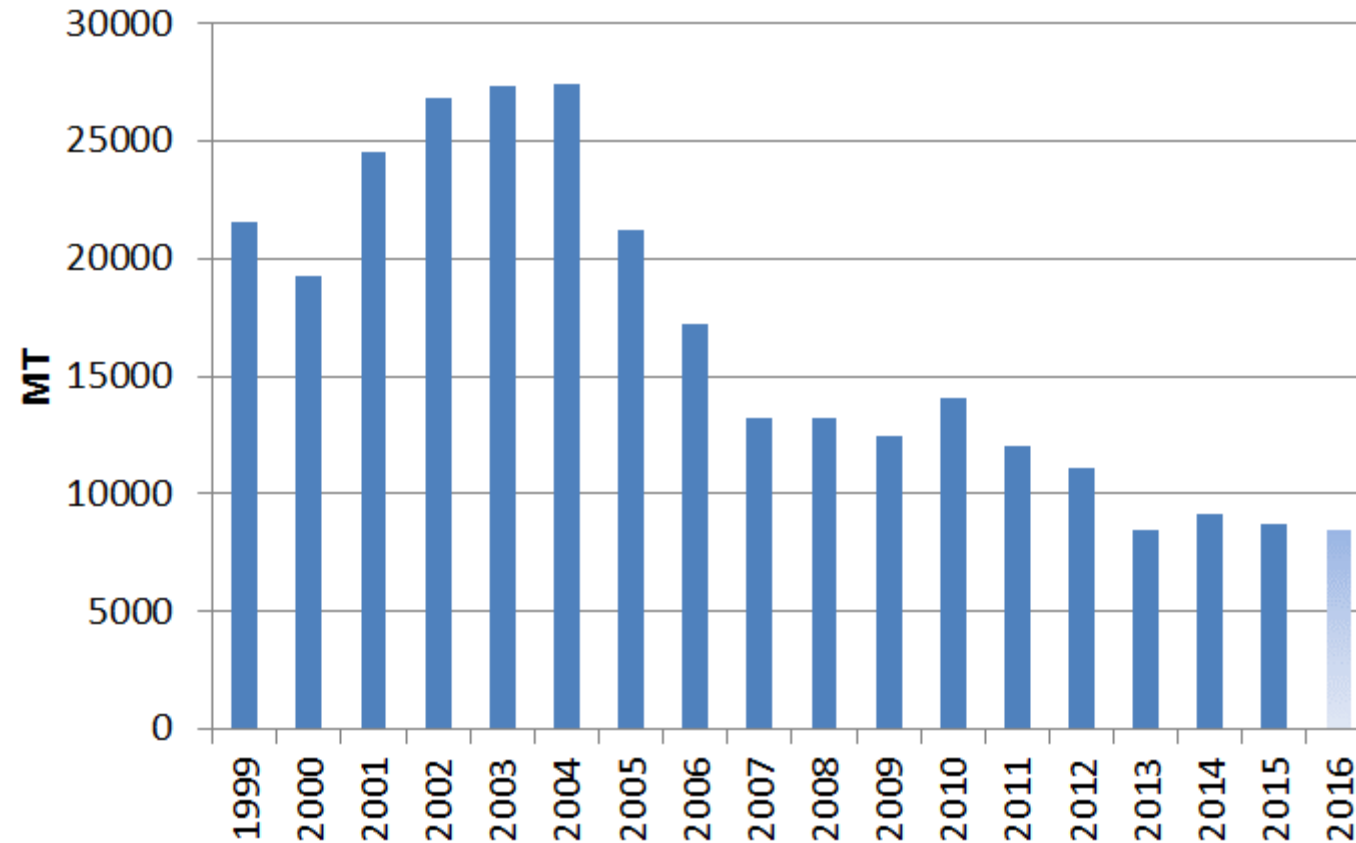
- 1990-1995 – 25 plants
- 2015 – 5 plants + 1 seasonal plant
 - Kampi, Ísafjörður (IS A521)
 - Hólmadrangur, Hólmavík (IS A485)
 - Dögun, Sauðárkrókur (IS A336)
 - FISK, Grundarfjörður (IS A406)
 - Rammi, Siglufjörður (IS A573)

 - Meleyri, Hvammstangi (IS A549)



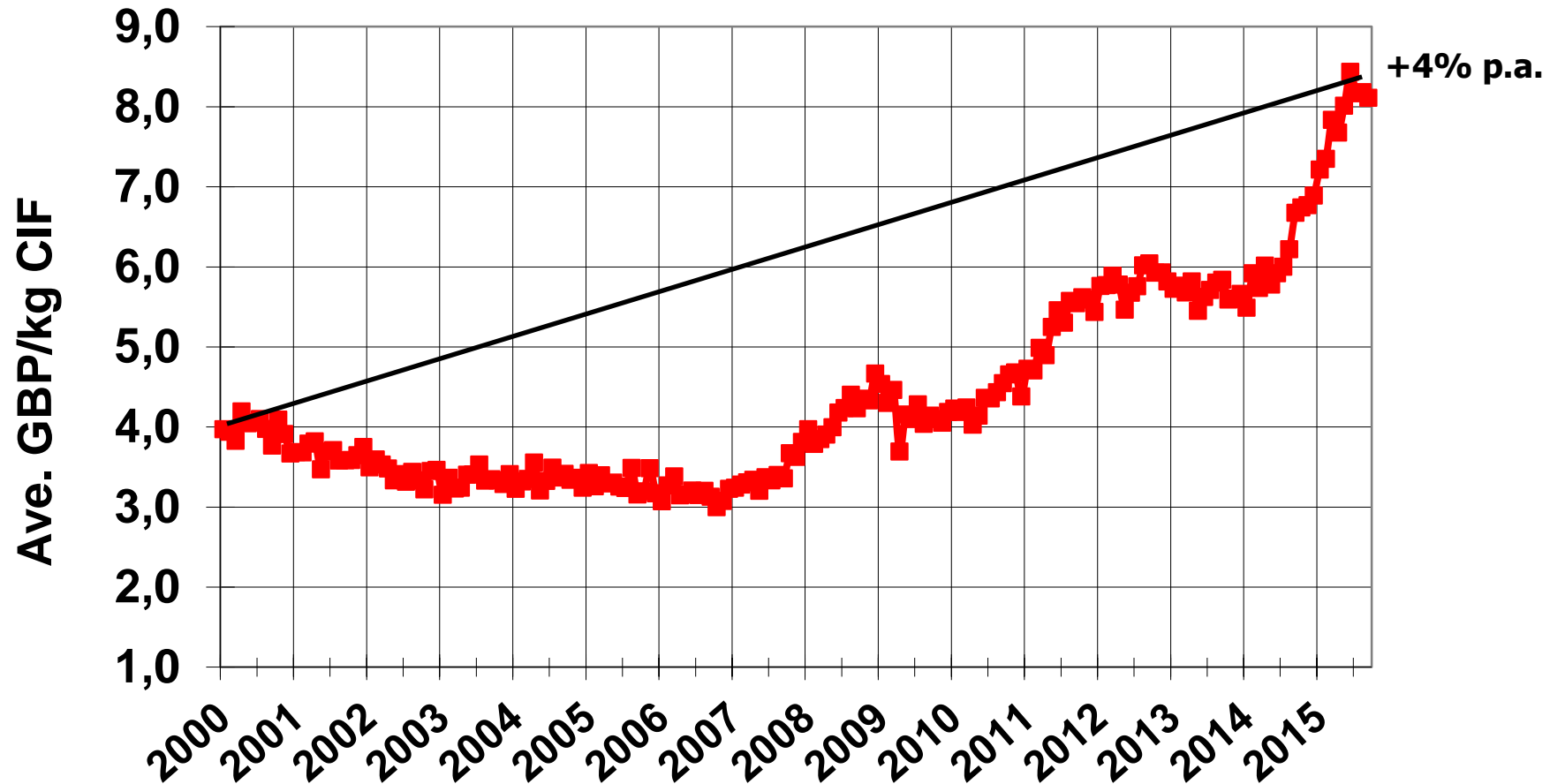
Vestmannaeyjar ●

Icelandic peeling plants c&p production



Source: Export custom clearing data

Average c&p export prices (GBP/kg cif - all sizes/glaze)



Source: Export custom clearing data



Outlook

- Imported raw material will continue to be important for peeling plants
- Offshore shrimp now back in ITQ quota system
- Current c&p finished product prices close to balance level



Questions?
