



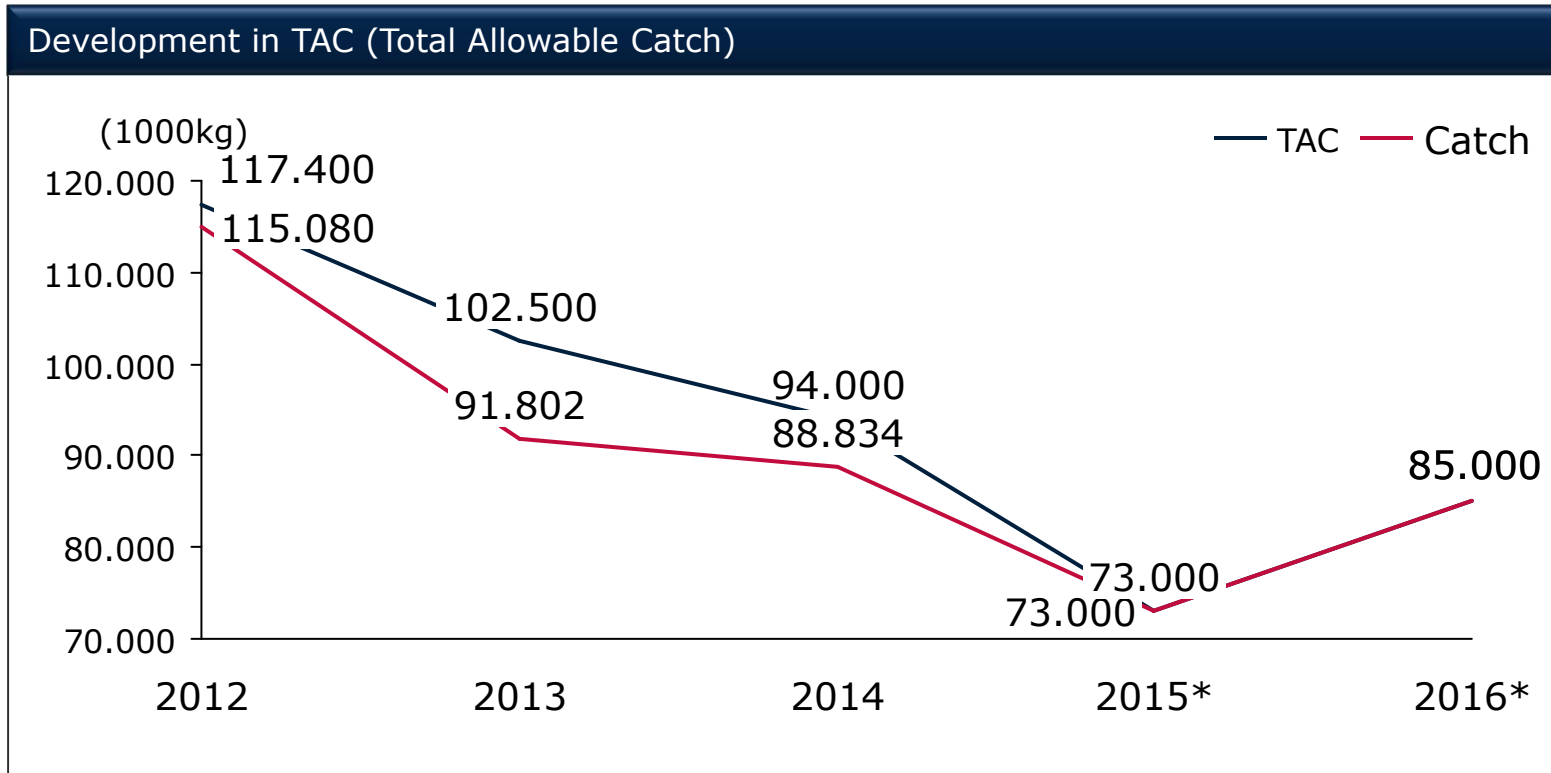
ICWPF 2015  
- Henrik Cordsen





# Development in Catch & Production

## - CWP in Greenland

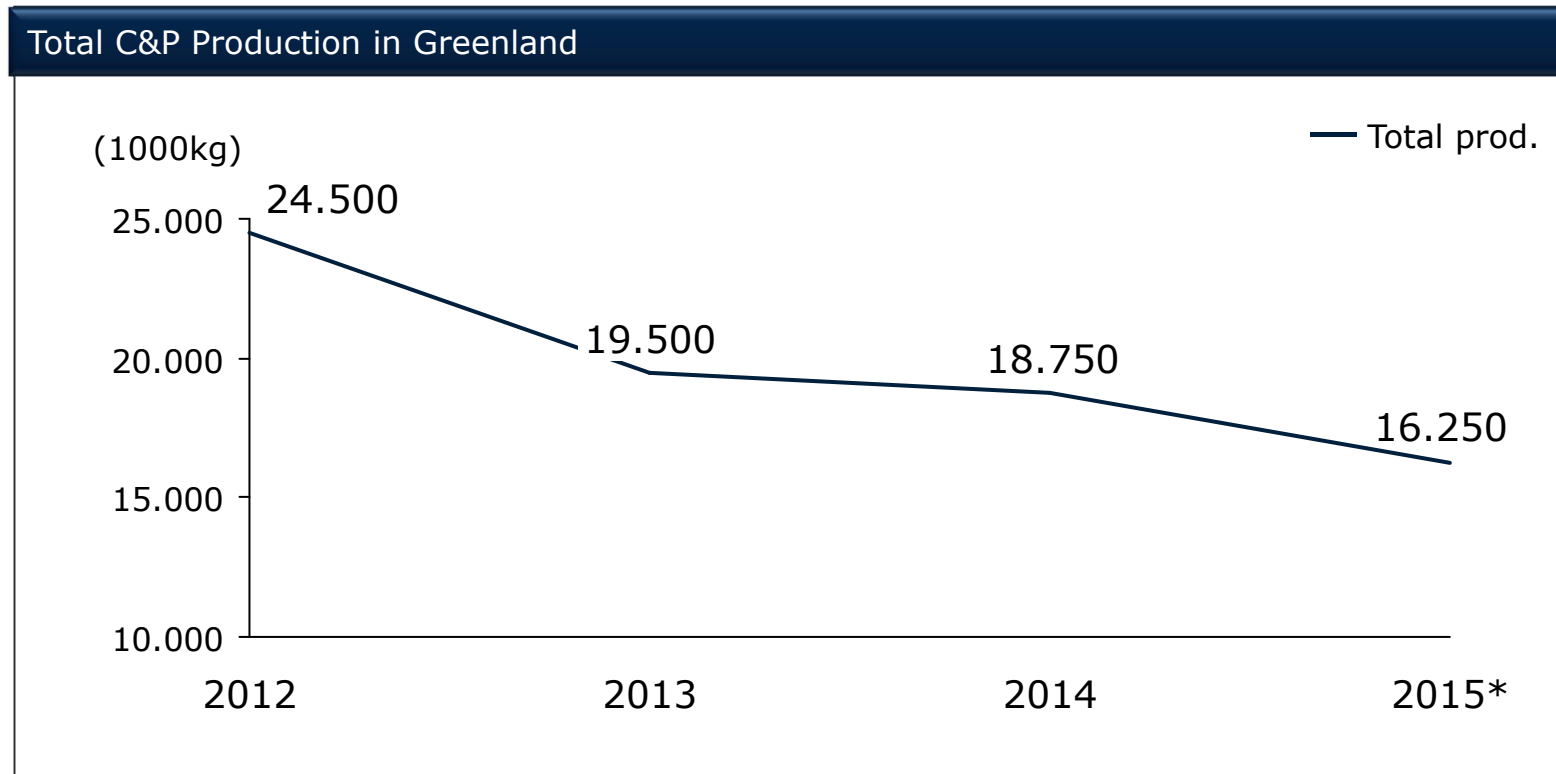


### Greenland TAC:

- 43% inshore fishery
- 57% offshore fishery of which 25% is landed at factories for further processing

\*2015 & 2016: Estimates

## Development in Catch & Production - CWP in Greenland



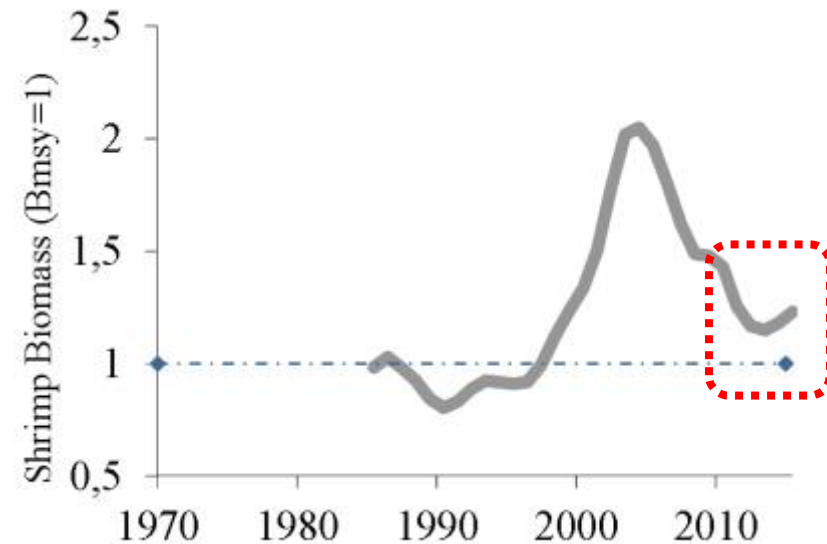
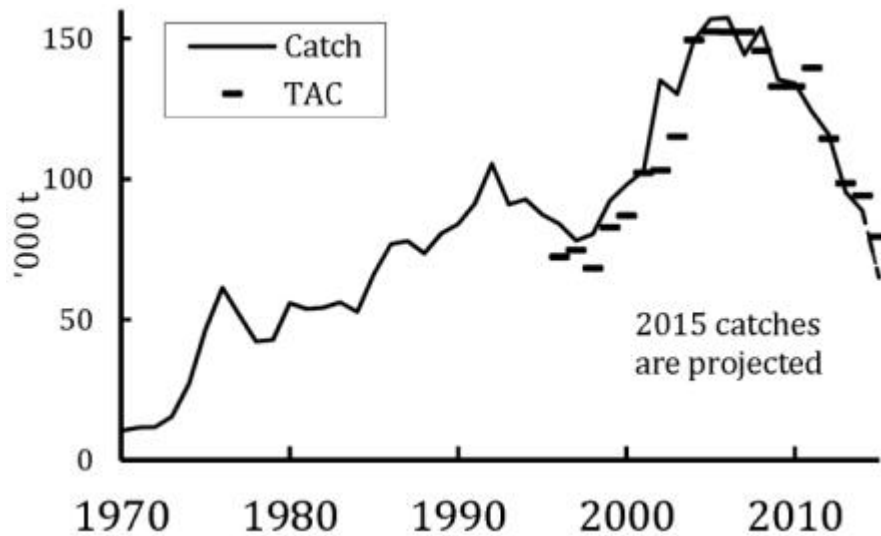
- The production of C&P in Greenland is correlating with the TAC.
- Limited non-Greenlandic volumes are expected to have been peeled in Greenland.

\*2015 & 2016: Estimates



# Catch & TAC Analysis

## West Greenland – Biological Advice September 2015 for 2016



- Maximum catch of 90.000 MT proposed for 2016 (was 80.000 MT in 2013 and 2014, 60.000 MT in 2015) as the previous negative development has not continued in 2015.
- The number of new recruits on the way into the fishery is the highest seen in 10 years.
- The TAC is recommended to be raised gradually by 12,5% per year.

# Development in Catch & Production

## -CWP in Greenland



### **TAC:**

- 2015 = 74.000 MT for West Greenland.
- Biological advisory for 2016 is set for 90.000 MT.
- 2016 TAC West GRL expected to raise to 83.000 MT (+12,5%)
- Stable TAC of 2.000 MT for East Greenland is expected. Entire East Greenland quota is offshore.

### **Perspective:**

- Present quotas gives over-capacity in landbased production facilities. Leaves time for going into niche productions and other species.
- Minor shifts in seasonality.
- Shifts in climate entails shifts in supply – ILU closed down already mid-February due to ice in the Disco Bay.
- Some changes are detected in size distribution. Less of smallest sizes.
- Increased focus from retailers on certainty of supply.
- Customers base is changing together with change in prices.